

ProcessView™

Product Overview

Gain a 360° View of Core Business Processes, Rapidly Identify Improvements, Accurately Quantify Savings

Executive View

Leading organizations and consulting firms are using Bluespring's ProcessView to empower process improvement teams with the Business Process Analysis (BPA) tools they need to initiate change that truly impacts the bottom line.

Organizations are increasingly looking for ways to improve key business processes in order to optimize operational efficiency, improve financial performance, and ensure quality product and service outcomes. To be successful, process improvement projects require effective collaboration between the people who know the business and the process improvement professionals who know how to analyze and improve processes. Business people are understandably hesitant to risk operational disruptions by making process changes without a clear picture of the results in advance.

But experienced specialists who know how to model processes and simulate the impact of change are in short supply, and process information is usually scattered among spreadsheets and diagrams, and in peoples' heads. Process improvement efforts are often slowed, or even prevented, because companies have no practical way to leverage scarce analyst resources and disjointed information.

ProcessView™ from Bluespring Software, Inc. is a new generation Business Process Analysis (BPA) solution that dramatically accelerates such projects by turning Microsoft Visio flowcharts into powerful process models that provide fast, comprehensive process analysis. It enables process

owners and analysts to more efficiently collaborate so that more work can be done more quickly. With many built-in capabilities, it guides teams through a step by step process that enables them to quickly visualize, model, and validate the current process; identify the best opportunities for improvement; simulate the results of potential changes; and rapidly produce a quantitative business case for change.

Draw and Verify the Current State Process Map

ProcessView operates as an integrated extension to Microsoft Visio, so everything has a familiar look and feel. Visio Flowcharts provide a visual representation of business processes as well as the starting point for analysis. You can begin with an existing flowchart, draw an entirely new flowchart, or easily import a flowchart from other sources. Any shape stencil can be used.

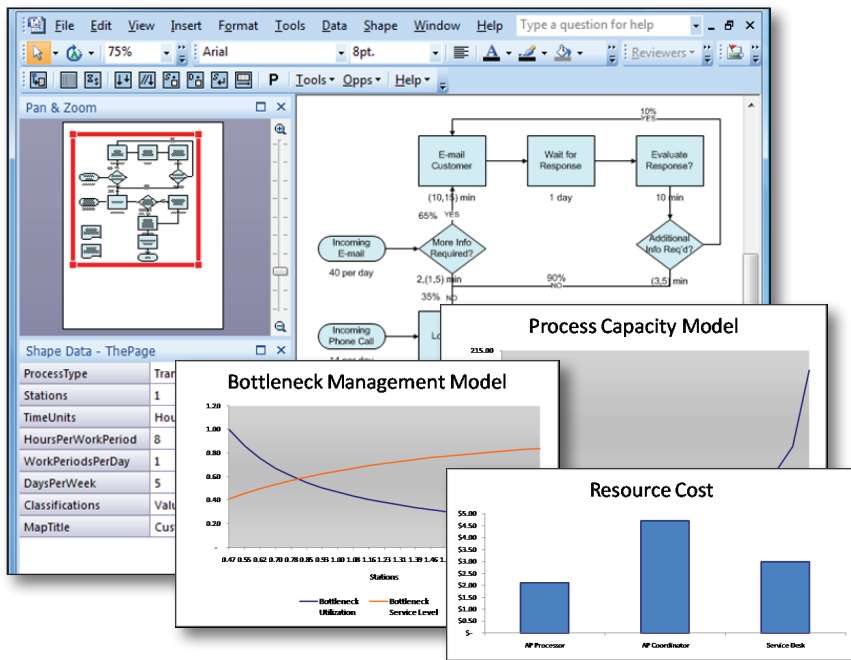
ProcessView Map Validation automatically scans the flowchart to check for any problems in the way it is drawn (e.g. disconnects in the flow, parallel connectors, or isolated shapes)

Configure the Model and Collect Data

A flowchart without numbers is just a picture with limited value. ProcessView adds a complete set of business

process attributes to Visio flow charts and shapes, and guides you through selection of the specific attributes needed for the type of analysis you want to perform. It then makes it easy to collect and enter the data that turns your flowchart into a comprehensive process model to drive analysis.

Features	Benefits
Visio flowchart drawing with automated map validation	Facilitate rapid development and clear, accurate visualization of any process
Configurable process attributes with flexible data input methods	Quickly turn your flowchart into a powerful process model with factors for time, work, resources, cost rates, etc.
Powerful path analysis to deconstruct the process into its various paths	Simplify understanding and enable detail analysis of complex processes
Powerful process analysis with clear process performance KPIs and charts	Clearly identify opportunities for improvement; enable iterative model refinement and validation
What-if simulation with compare report	Rapidly model, analyze, and compare potential future state processes, volume increases, cost rate changes, etc.
Management outbrief presentation	Easily communicate quantitative business case for process improvement efforts



Transform Visio diagrams into powerful process models for quantitative analysis and a business case for change

Selectable pre-defined and custom attributes speed model development. Standard Attributes such as arrival rate, batch size, duration, work time, resources, stations, cost rates, yields, decision probabilities, etc. support most types of analysis. Custom attributes support special analysis needs (e.g. distance traveled, etc.). Time and cost can be entered as average, most likely, or a range of values to enable you to represent the best available knowledge about an activity. Data can be entered directly into the process map, collected using Visio input sheets, imported from Excel, or accessed real time using Visio data linking.

A Process Attribute Wizard makes it even easier to configure the model by automatically configuring the appropriate attributes based on the questions you would like answered about the process.

Activity Classifications such as department, geographical region, value-added vs. non-valued-added process time, etc. enable later analysis, summaries, and comparisons.

Analyze and Validate the Process Model; Identify Opportunities for Improvement

ProcessView goes to work as soon as your flow chart is drawn and your process data defined. Supporting an iterative approach, it enables your team to rapidly validate and analyze the process model, identify the best opportunities for improvement, perform what-if simulations, and outline improvement plans.

Process Analysis automatically produces pre-formatted Excel outputs at varying levels of detail depending on the version of ProcessView being used. Summary Statistics show calculated process time, duration, and resource costs directly on the Visio map with a single mouse click. The Summary

Analysis report provides process performance KPIs broken down by activity, with Pareto charts to identify bottlenecks and the areas where improvement efforts should be focused. Extended Analysis provides analysis by activity classification, user-defined attributes, and value class; takt vs. process time, minimum FTEs, yield, and more. Advanced Analysis utilizes queuing theory algorithms to provide throughput and capacity analysis, including wait times, cycle times, variation, service levels, and more.

Path Analysis uses a powerful graph algorithm to automatically deconstruct the process, identify the workflow paths, and create separate Visio diagrams for selected paths. Using this unique capability, teams can clearly see what paths are traveled most frequently and understand the differences between them. Support for rework and parallel paths allows modeling of any real-life business process.

Improvement Opportunity Shapes added directly to the Visio diagram with pre-defined and custom attributes make it easy to capture information about improvement activities.

Simulate Future State Processes and Create a Quantitative Business Case for Change

ProcessView makes it easy to model potential process improvements, simulate the effect on performance, quantitatively compare the current state process to future state processes, and calculate exactly the improvements to be expected if changes are implemented. Combined with implementation costs and schedules, this information provides everything you need to calculate ROI for your process improvement efforts.

What-if Simulations can be easily performed to show the impact of possible changes in workflow, activities, resources, stations, costs, etc. A Powerful Compare Report clearly shows the difference in process performance KPIs between any two process maps. Comparison of the current state process to a potential future state shows exactly what improvements can be expected.

The Management Outbrief automatically creates tailored PowerPoint slides for presentation to the team and management to make decisions easy.

Empower Teams and Collaborate Like Never Before

ProcessView supports a clear, easy to understand, and practical approach to business process analysis that empowers and enables effective collaboration.

Essential, Standard and Professional Versions provide the right tool for everyone on the team from process owners to experienced process improvement professionals. Standard Microsoft Office Tools make it easy to share information. Visio Publishing to SharePoint further extends your ability to effectively collaborate across the enterprise. Built-in Training Aids help everyone get up to speed quickly.



- www.bluespringsoftware.com
- 200 W. 4th St. 6th Floor Cincinnati, OH 45202
- 513.794.1764 | 877.794.1764

Bluespring Software is a leading provider of Business Process Innovation (BPI) products and services. Using a "Rapid Process Assessment" methodology combined with advanced solutions for Business Process Analysis (BPA), Business Process Management (BPM) and Operational Excellence (OE), Bluespring helps organizations clearly understand and significantly improve key business processes in order to reduce cost, increase customer responsiveness, ensure quality, maintain compliance, and support growth. From process discovery and analysis through design, automation, management and optimization, Bluespring has the expertise, services and tools to support every stage of the BPI Life Cycle.