

LeanView™

Product Overview

Improve Operational and Financial Performance by Eliminating Waste from Key Value Streams

Executive View

Leading organizations in manufacturing, healthcare and other environments are using Bluespring's LeanView to accelerate their Lean Transformation by taking Value Stream Mapping to the next level.

Organizations must continually optimize the operational efficiency, financial performance, and quality outcome of their product and service delivery processes. The more efficiently a company delivers what the market demands, the more it will increase revenues, lower operating costs, and improve profitability.

Lean provides a systematic approach to identifying and eliminating waste, or non-value-added activities. Value Stream Mapping (VSM) helps Lean practitioners visualize flow and identify opportunities for improvement. The results of assessment events are converted into specific efforts to remove waste, and thus improve performance.

The VSM process has traditionally been performed using butcher paper to draw the value stream and collect data, supported by spreadsheet calculations. But this approach is very time-consuming, and can be prone to inconsistency in terms of the quality and completeness of analysis, the format of deliverables, and the effectiveness of outcomes. It does not lend itself to iterative analysis, does not scale, and does not provide visibility beyond the immediate team. The required time often slows the rate of progress. Inconsistent results can even create doubts and jeopardize an organization's commitment to Lean Transformation.

LeanView™ from Bluespring Software takes the non value added work out of value stream mapping and analysis. As a Microsoft Visio add-in, LeanView turns native Visio diagrams into dynamic data-driven value stream maps using familiar lean symbols, concepts, calculations and terminology. It provides a set of standardized tools that enable teams to more rapidly and consistently visualize, analyze, and transform value streams using proven lean principles. It closes the communication gap by converting VSMs into electronic business intelligence that can be easily shared across the team and enterprise.

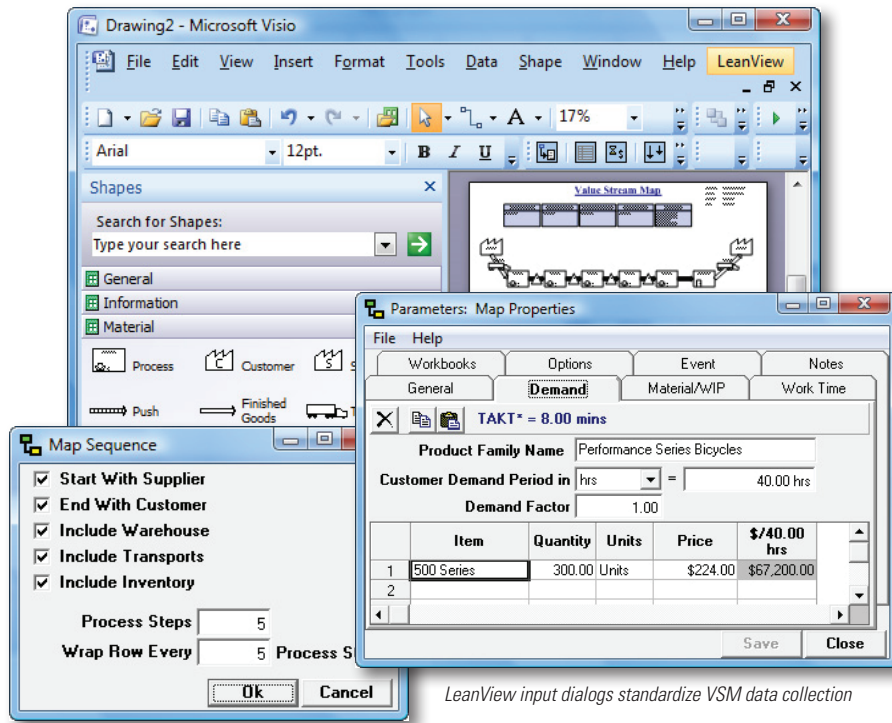
Visualize, Define & Validate Value Streams

LeanView extends Microsoft Visio with a Value Stream Mapping template that makes it easy for teams to map and validate any product or service value stream.

Standard Lean shape stencils, drag & drop drawing, auto-draw capabilities, and event support capabilities provide a complete mapping environment that speeds the VSM process while capturing a comprehensive electronic record. Value Stream Attributes, including customer demand with takt time calculation, material, work time, etc. enable rapid capture of information about the overall value stream. Activity Attributes for processes and inventory handling

capture all the data required for Lean calculations. For instance, process attributes include people, flow time, manual time, auto time, normal process quantity, % yield, % VA processing time, etc. Custom properties are also supported.

Features	Benefits
Visio-based value stream mapping with drag & drop lean shapes, auto-draw & event work area	Facilitate rapid, accurate VSM development events
Pre-defined attributes for the value stream and all activities	Quickly collect all the right data for Lean calculations
Multi-level VSM links with lean calculation roll-up	Complex enterprise or supply chain VSMs become practical by linking lower level VSMs
VSM Analysis Workbook with scaled VA timeline, Takt & inventory analysis, waste summary, and sorted metrics	Accelerate the analysis process while eliminating errors
Automatic outbriefs in PPT and Word	Easy, effective communication to executives and other teams
Electronic Value Stream Maps	Ability to share across teams; rapid what-if analysis; VSMs become enterprise asset



LeanView input dialogs standardize VSM data collection

LeanView 'Map Sequence' for Auto-Drawing

Advanced VSM capabilities help teams deal with complex real-life situations. Multi-Level Value Stream Links enable development of sub value streams that automatically calculate the attributes for higher level activities. Using this powerful capability, VSM work can be broken down to lower levels of detail, and low level value streams can be rolled up to the enterprise or supply chain level. Parallel Path and Support Activity markers let teams account for all the people, work, and material associated with the value stream. Color-coded Path Highlighters make it easy to identify and view different paths in a Value Stream Map, providing a quick way to document various paths.

Assess Value Streams and Prioritize Opportunities to Remove Waste

LeanView automates value stream analysis using the value stream map. It simplifies and standardizes value stream assessment in terms of flow time, value-added (VA) vs. non value-added (NVA) time, activity time imbalances with takt, and cost. It identifies all forms of waste, and provides the information to prioritize improvement opportunities.

The Map Analysis Engine automatically creates an Excel Workbook to perform Lean calculations. This speeds analysis while eliminating workbook errors. A Flow Path Selector makes it easy to analyze any subset of the value stream in order to focus attention on specific areas.

The Map Analysis Report presents all the information in a clear, easy to understand format. A scaled VA timeline provides a visual representation of VA vs. NVA time that is not practical using paper-based methods. The Value Stream Table details accumulated VA time, yield, and flow time

along with calculated takt and % VA. Takt Analysis shows where balancing is needed to meet the pace of demand. Inventory Analysis shows material consumption and turns. The Process Waste Summary shows all occurrences of each type of waste along with associated cost. Sorted Metrics lists activities "worst to best" for NVA time, elements of VA time, and yield to enable easy Pareto analysis.

Develop Actionable Improvement Plans

LeanView also supports rapid development of improvement action plans. It helps VSM teams identify and categorize efforts, document tasks and responsibilities, and facilitate communication of all the information developed during the event to executives and others.

Starburst Shapes denote actions and capture tasks, responsibilities, and notes. Steps are identified as: "Just Do It," "Event," or "Project". Action Ratings categorize as "Challenge", "Kill", "Implement," or "Possible" based on degree of difficulty and potential for improvement.

Outbriefs in Microsoft PowerPoint and Word automatically summarize all the information into familiar formats for easy communication to decision-makers. Export to Microsoft Project transforms tasks into a project plan for execution.

Share Information to Accelerate, Sustain, and Scale Lean Transformation

LeanView enables a level of information sharing that is simply not possible using traditional methods. Using LeanView, all of the valuable information generated in the process of value stream mapping, analysis, and improvement is captured electronically in a standardized format. That becomes a company asset that can be used to accelerate, sustain, and scale Lean Transformation across the entire enterprise or supply chain. It facilitates the sharing of successes, fosters collaboration among teams, and gives management visibility of progress.

SharePoint Publishing using Visio Services makes it practical to share value stream information across dispersed teams, and to monitor the evolution of improvements.

Rapidly Empower a Team

Because LeanView has been developed in strict compliance with Lean concepts and has all the standardized VSM tools built in, it makes VSM teams productive far faster than with traditional approaches. Pre-defined standard shapes, attributes and calculations accelerate learning and drive consistency across teams. Use of familiar Microsoft Visio, Excel, Word, and PowerPoint tools lets team members focus on value stream improvement day one.

Quick-start tutorial and hands-on lab with example scenarios (e.g. State Street Assembly & Michigan Steel from "Learning to See") further speed proficiency.



- www.bluespringsoftware.com
- 200 W. 4th St. 6th Floor
Cincinnati, OH 45202
- 513.794.1764 | 877.794.1764

Bluespring Software is a leading provider of Business Process Innovation (BPI) products and services. Using a "Rapid Process Assessment" methodology combined with advanced solutions for Business Process Analysis (BPA), Business Process Management (BPM) and Operational Excellence (OE), Bluespring helps organizations clearly understand and significantly improve key business processes in order to reduce cost, increase customer responsiveness, ensure quality, maintain compliance, and support growth. From process discovery and analysis through design, automation, management and optimization, Bluespring has the expertise, services and tools to support every stage of the BPI Life Cycle.